



YE3 SERIES(IE3)

THREE-PHASE CAST IRON INDUCTION MOTOR

Operating Conditions:

Ambient temperature:-15°C ≤ ~ ≤ 40°C

Rated voltage:380V or any voltage between 220V - 760V

Rated frequency: 50Hz, 60Hz

Protection class: IP44, IP54, IP55

Insulation class: B, F, H

Altitude: not exceed 1000 m

Cooling method: ICO141

Duty:S1 (continuous)

Connection:Star - connection for up to 3KW , delta-connection for 4KW and above



YE3 Series IE3 Efficiency Motors Technical Data (400V/50Hz) - 2 pol

Model	Output (kW)	Rated current (A)	Rotation speed (r/min)	Efficiency 100% load(%)	Efficiency 75% load(%)	Efficiency 50% load(%)	Power factor (Φ)	Rated torque(N.m)	Tst / Tn (Times)	Tmin/ Tn (Times)	Tmax/ Tn (Times)	Ist/In (Times)	Nosie (dB)	Net weight (kg)	Moment of inertia(kg·m ²)
YE3 801-2	0.75	1.68	2880	80.7	81.0	76.2	0.80	2.49	2.5	2.1	2.8	7.5	67	15.20	0.00093
YE3 802-2	1.1	2.40	2880	82.7	83.5	81.6	0.80	3.65	2.5	1.8	2.8	8	67	17.10	0.00128
YE3 90S-2	1.5	3.06	2880	84.2	84.9	84.0	0.84	4.97	2.5	1.8	2.8	8.5	72	21.5	0.00224
YE3 90L-2	2.2	4.45	2880	85.9	86.4	84.7	0.83	7.30	2.5	1.8	2.8	8.6	72	24.6	0.00279
YE3 100L-2	3	5.65	2900	87.1	88.5	86.8	0.88	9.88	2.5	2.0	2.8	9.5	76	35.5	0.00496
YE3 112M-2	4	7.28	2910	88.1	88.5	87.1	0.90	13.13	2.5	2.0	2.8	10.5	77	44.5	0.00744
YE3 132S1-2	5.5	10.11	2910	89.2	90.2	88.6	0.88	18.05	2.5	2.0	3.0	10	80	63.2	0.01468
YE3 132S2-2	7.5	13.50	2920	90.1	90.8	89.3	0.89	24.53	2.5	1.5	3.0	10	80	70.2	0.01903
YE3 132M1-2	9.2	16.47	2920	90.6	91.2	89.5	0.89	30.09	2.5	1.5	3.0	10	80	76.8	0.02048
YE3 160M1-2	11	19.34	2930	91.2	93.8	93.0	0.90	35.85	2.5	1.4	3.0	9.5	86	118.0	0.05178
YE3 160M2-2	15	26.18	2940	91.9	93.1	92.9	0.90	48.72	2.5	1.4	3.0	10	86	128.0	0.06206
YE3 160L-2	18.5	31.76	2940	92.4	93.5	93.3	0.91	60.09	2.5	1.4	3.0	9.5	86	144.00	0.07669
YE3 180M-2	22	38.5	2945	92.7	94.1	93.6	0.89	71.34	2.5	1.4	3.0	9	89	183.40	0.09665
YE3 200L1-2	30	52.1	2945	93.3	93.8	93.2	0.89	97.3	2.5	1.5	2.5	8.5	92	247.00	0.17351
YE3 200L2-2	37	64.0	2945	93.7	94.4	94.2	0.89	120.0	2.5	1.5	2.5	8.5	92	268.00	0.20008
YE3 225M-2	45	75.9	2950	94	94.6	94.1	0.91	145.7	2.5	1.4	2.5	8.5	92	369.00	0.34366
YE3 250M-2	55	93.5	2960	94.3	94.5	93.1	0.90	177.4	2.5	1.4	2.6	10	93	428.00	0.44434
YE3 280S-2	75	125.6	2960	94.7	94.9	93.7	0.91	242.0	2.5	1.8	2.6	10	94	587.30	0.82911
YE3 280M-2	90	150.3	2960	95	95.2	94.3	0.91	290.4	2.5	1.8	2.6	10	94	655.00	0.98168
YE3 315S-2	110	185.3	2960	95.2	95.5	94.6	0.90	354.9	2.0	1.4	2.3	7	96	980.00	1.70352
YE3 315M-2	132	221.9	2960	95.4	95.5	94.7	0.90	425.9	2.0	1.4	2.3	7	96	1100.00	1.93860
YE3 315L1-2	160	267.8	2960	95.8	95.8	94.5	0.90	516.2	2.0	1.4	2.3	7	99	1155.00	2.19758
YE3 315L2-2	200	334.8	2960	95.8	96.0	94.7	0.90	645.3	2.0	1.4	2.3	7	99	1260.00	2.55368
YE3 355M1-2	220	394.6	2960	95.8	96.2	94.8	0.84	709.8	2.0	1.5	2.3	6.5	103	1590.00	2.95585
YE3 355M2-2	250	448.4	2960	95.8	96.2	94.8	0.84	806.6	2.0	1.5	2.3	6.5	103	1650.00	3.14272
YE3 355L1-2	280	502.2	2960	95.8	96.2	94.8	0.84	903.4	2.0	1.5	2.3	6.5	103	1715.00	3.47911
YE3 355L2-2	315	558.3	2960	95.8	96.2	94.8	0.85	1016.3	2.0	1.5	2.3	6.5	103	1780.00	3.85287

YE3 Series IE3 Efficiency Motors Technical Data (400V/50Hz) - 4 pol

Model	Output (kW)	Rated current (A)	Rotation speed (r/min)	Efficiency 100% load(%)	Efficiency 75% load(%)	Efficiency 50% load(%)	Power factor(Φ)	Rated torque(N.m)	Tst / Tn (Times)	Tmin/ Tn (Times)	Tmax/Tn (Times)	Ist/In (Times)	Nosie (dB)	Net weight (kg)	Moment of inertia(kg*m ²)
YE3 802-4	0.75	1.90	1420	82.5	82.8	80.6	0.69	5.04	2.8	2.2	2.8	6.3	58	18.20	0.00155
YE3 90S-4	1.1	2.62	1430	84.1	84.6	83.2	0.72	7.35	2.8	2.2	2.8	6.8	61	23.00	0.00372
YE3 90L-4	1.5	3.63	1430	85.3	86.1	85.2	0.70	10.02	2.8	2.2	3.0	7.3	61	26.30	0.00469
YE3 100L1-4	2.2	4.52	1430	86.7	87.8	85.2	0.81	14.69	2.8	2.2	3.0	8	64	35.50	0.00922
YE3 100L2-4	3	6.33	1435	87.7	88.0	85.9	0.78	19.97	2.5	2.2	3.0	8.2	64	38.50	0.01195
YE3 112M-4	4	7.95	1440	88.6	88.9	87.5	0.82	26.53	2.5	2.2	3.0	8.6	65	47.00	0.01545
YE3 132S-4	5.5	10.67	1440	89.6	90.9	88.9	0.83	36.48	2.5	1.8	3.0	9	71	68.30	0.03397
YE3 132M-4	7.5	14.09	1440	90.4	91.3	91.2	0.85	49.74	2.5	1.6	3.0	9	71	79.00	0.04412
YE3 132M2-4	9.2	17.19	1440	90.9	91.8	90.5	0.85	61.01	2.5	1.6	3.0	9	71	87.50	0.04700
YE3 160M-4	11	20.68	1450	91.4	92.2	91.7	0.84	72.45	2.5	1.3	3.0	10	75	127.00	0.10355
YE3 160L-4	15	27.33	1450	92.1	92.9	92.2	0.86	98.8	2.5	1.3	2.8	8.5	75	160.00	0.13750
YE3 180M-4	18.5	33.5	1460	92.6	93.6	93.0	0.86	121.0	2.5	1.8	3.0	9	76	169.40	0.15530
YE3 180L-4	22	39.2	1460	93	93.7	92.9	0.87	143.9	2.5	1.8	3.0	10	76	196.00	0.19433
YE3 200L-4	30	57.1	1470	93.6	93.7	93.2	0.81	194.9	2.5	1.8	2.8	9	79	252.00	0.29441
YE3 225S-4	37	65.4	1470	93.9	95.2	94.3	0.87	240.4	2.5	1.4	2.5	9.2	81	324.50	0.57838
YE3 225M-4	45	79.3	1470	94.2	95.2	94.5	0.87	292.3	2.5	1.5	2.5	9	81	352.90	0.65309
YE3 250M-4	55	95.4	1470	94.6	95.2	94.5	0.88	357.3	2.5	1.8	2.5	8.5	83	427.40	0.76504
YE3 280S-4	75	131.0	1480	95	95.1	94.8	0.87	484.0	2.5	1.8	2.8	10	86	673.30	1.99603
YE3 280M-4	90	160.5	1480	95.2	95.1	95.0	0.85	580.7	2.5	1.8	2.8	10	86	692.00	2.18345
YE3 315S-4	110	189.1	1480	95.4	95.7	94.6	0.88	709.8	2.2	1.5	2.6	9	93	1027.00	3.71808
YE3 315M-4	132	226.5	1480	95.6	95.8	95.0	0.88	851.8	2.2	1.5	2.6	9	93	1155.00	4.29667
YE3 315L1-4	160	273.9	1480	95.8	96.0	95.1	0.88	1032.4	2.2	1.5	2.6	9	97	1240.00	5.10990
YE3 315L2-4	200	337.9	1480	96	96.2	95.3	0.89	1290.5	2.2	1.5	2.6	9	97	1400.00	6.17334
YE3 355M1-4	220	371.7	1480	96	96.2	95.3	0.89	1419.6	2.0	1.3	2.3	8	101	1560.00	7.04227
YE3 355M2-4	250	422.3	1480	96	96.3	95.4	0.89	1613.2	2.0	1.3	2.3	8	101	1600.00	7.63820
YE3 355L1-4	280	473.0	1480	96	96.4	95.4	0.89	1806.8	2.0	1.3	2.3	8	101	1650.00	8.31927
YE3 355L2-4	315	532.1	1480	96	96.3	95.5	0.89	2032.6	2.0	1.3	2.3	8	101	1700.00	9.34080

YE3 Series IE3 Efficiency Motors Technical Data (400V/50Hz) - 6 pol

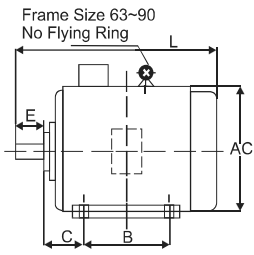
Model	Output (kW)	Rated current (A)	Rotation speed (r/min)	Efficiency 100% load(%)	Efficiency 75% load(%)	Efficiency 50% load(%)	Power factor(Φ)	Rated torque(N.m)	Tst / Tn (Times)	Tmin/ Tn (Times)	Tmax/Tn (Times)	Ist/In (Times)	Nosie (dB)	Net weight (kg)	Moment of inertia(kg*m ²)
YE3 90S-6	0.75	2.05	935	78.9	79.6	77.2	0.67	7.66	2.0	1.8	2.2	5	57	21.50	0.00435
YE3 90L-6	1.1	2.97	940	81	81.5	80.2	0.66	11.18	2.3	1.8	2.2	5.2	57	25.50	0.00611
YE3 100L-6	1.5	3.55	940	82.5	83.0	81.6	0.74	15.24	2.0	1.7	2.2	5.2	61	33.50	0.00972
YE3 112M-6	2.2	5.38	940	84.3	85.0	83.2	0.70	22.35	2.0	1.8	2.2	6.2	65	40.00	0.01637
YE3 132S-6	3	6.84	940	85.6	86.1	84.5	0.74	30.48	2.0	1.7	2.2	6	69	59.00	0.03223
YE3 132M1-6	4	8.99	950	86.8	87.6	85.2	0.74	40.21	2.0	1.6	2.5	7	69	75.50	0.04338
YE3 132M2-6	5.5	12.71	950	88	88.8	86.9	0.71	55.29	2.3	1.8	2.5	7.5	69	76.30	0.05443
YE3 160M-6	7.5	16.2	960	89.1	90.3	88.0	0.75	74.6	2.3	1.4	2.8	7.5	73	112.00	0.08726
YE3 160L-6	11	23.1	960	90.3	91.2	88.5	0.76	109.4	2.5	1.4	2.8	8.5	73	134.00	0.13544
YE3 180L-6	15	30.1	960	91.2	92.0	90.3	0.79	149.2	2.5	1.4	2.8	8	73	184.50	0.27973
YE3 200L1-6	18.5	36.4	970	91.7	92.3	90.6	0.80	182.1	2.5	1.4	2.8	9.5	76	231.00	0.38345
YE3 200L2-6	22	42.5	970	92.2	93.0	91.3	0.81	216.6	2.5	1.5	2.8	10	76	249.00	0.44941
YE3 225M-6	30	53.0	975	92.9	93.8	90.9	0.88	293.8	1.8	1.5	2.2	7	76	339.00	0.67058

YE3 Series IE3 Efficiency Motors Technical Data (400V/50Hz) - 6 pol

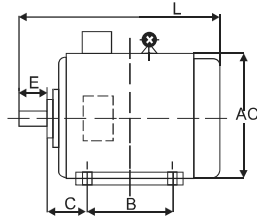
Model	Output (kW)	Rated current (A)	Rotation speed (r/min)	Efficiency 100% load(%)	Efficiency 75% load(%)	Efficiency 50% load(%)	Power factor(Φ)	Rated torque(N.m)	Tst/Tn (Times)	Tmin/Tn (Times)	Tmax/Tn (Times)	Ist/In (Times)	Nosie (dB)	Net weight (kg)	Moment of inertia(kg·m ²)
YE3 250M-6	37	67.3	975	93.3	94.0	91.8	0.85	362.4	1.8	1.3	2.0	7	78	399.40	0.99243
YE3 280S-6	45	83.5	980	93.7	94.6	92.7	0.83	438.5	2.5	1.8	2.8	10	80	551.00	2.20274
YE3 280M1-6	55	99.3	980	94.1	95.0	93.4	0.85	536.0	2.5	1.8	2.8	10	80	624.30	2.57302
YE3 315S-6	75	139.6	980	94.6	94.8	93.2	0.82	730.9	2.0	1.3	2.3	7.5	85	860.00	3.80317
YE3 315M-6	90	166.9	980	94.9	95	93.4	0.82	877.0	2.0	1.3	2.3	7.5	85	970.00	4.45274
YE3 315L1-6	110	203.6	980	95.1	95.4	94	0.82	1071.9	2.0	1.3	2.3	7.5	85	1070.00	5.53956
YE3 315L2-6	132	243.6	980	95.4	95.7	94.2	0.82	1286.3	2.0	1.3	2.3	7.5	85	1196.00	6.62638
YE3 355M1-6	160	294.6	980	95.6	95.8	94.3	0.82	1559.2	2.0	1.3	2.3	7.5	92	1537.00	8.97637
YE3 355M2-6	200	367.5	980	95.8	95.8	94.3	0.82	1949.0	2.0	1.3	2.3	7.5	92	1720.00	11.00175
YE3 355L1-6	220	404.2	980	95.8	96	94.2	0.82	2143.9	2.0	1.3	2.3	7.5	92	1800.00	11.64134
YE3 355L-6	250	459.3	980	95.8	96	94.3	0.82	2436.2	2.0	1.3	2.3	7.5	92	1880.00	13.56011



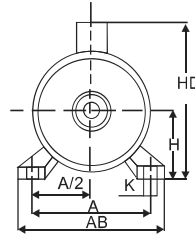
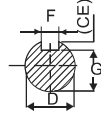
IM B3



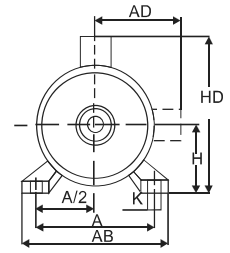
Frame Size 63~132



Frame Size 160~355



Frame Size 63~71



Frame Size 80~355

Installation Dimension

Frame No.	Poles	Mounting Dimensions & Tolerance											Frame Dimensions													
		A	A/2	B	C	D	E	F	G ¹⁾	H	K ²⁾	AB	AC	AD	HD	L										
80	2,4,6,8	125	62.5	100	50	19	40	6	15.5	80	10	165	175	145	220	295										
90S		140	70	100	56											±1.5	24	±0.31	20	90	0	180	195	155	250	320
90L				125	56											+0.009 -0.004	50	8	24	0	100	0	205	215	180	270
100L		160	80	140	63	±2.0	28	60	0	24	0	230	240	190	300	400										
112M				140	70											±0.37	112	12	270	275	210	345	470			
132S		216	108	140	89	±3.0	38	80	10	33	132	+0.430 0	320	330	255	420	510									
132M				178	89												±0.37	112	12	270	275	210	345	470		
160M		254	127	210	108	±3.0	42	110	12	37	160	+0.430 0	320	330	255	420	615									
160L				254	108												±0.43	14	180	355	380	280	455	700		
180M		279	139.5	241	121	±3.0	48	110	14	42.5	180	+0.430 0	355	380	280	455	700									
180L				279	121												±0.43	14	180	355	380	280	455	740		
200L		318	159	305	133	±4.0	55	16	49	200	19	395	420	305	505	770										
225S	4,8	356	178	286	149												60	140	±0.50	18	0	435	470	335	560	815
225M	2			356	178	311	149	55	110	±0.43	16	225	+0.520 0	435	470	335	560	820								
	4,6,8	60	110															±0.43	16	49	845					
250M	2	406	203	349	168	60	18	53	250	0	490	510	370	615	910											
	4,6,8															65	18	58	250	0	490	510	370	615	910	
280S	2	457	228.5	368	190	65	140	20	67.5	280	+0.520 0	550	580	410	680	985										
	4,6,8															75	18	58	280	0	550	580	410	680	1035	
280M	2	457	228.5	419	190	65	140	18	67.5	280	+0.520 0	550	580	410	680	1035										
	4,6,8															75	18	67.5	280	0	550	580	410	680	1035	
315S	2	508	254	406	216	65	170	18	58	315	+0.520 0	635	645	530	845	1185										
	4,6,8,10															80	22	71	315	0	635	645	530	845	1215	
315M	2	508	254	457	216	65	140	18	58	315	+0.520 0	635	645	530	845	1295										
	4,6,8,10															80	22	71	315	0	635	645	530	845	1325	
315L	2	508	254	457	216	65	140	18	58	315	+0.520 0	635	645	530	845	1295										
	4,6,8,10															80	22	71	315	0	635	645	530	845	1325	
355M	2	610	305	560	254	75	140	20	67.5	355	+0.520 0	730	710	655	1010	1500										
	4,6,8,10															95	25	86	355	0	730	710	655	1010	1530	
355L	2	610	305	630	254	75	140	20	67.5	355	+0.520 0	730	710	655	1010	1500										
	4,6,8,10															95	25	86	355	0	730	710	655	1010	1530	

