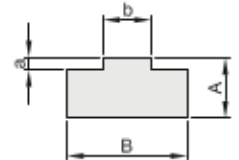


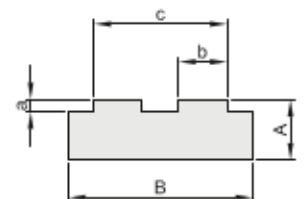
## “T” PROFILE FOR SIMPLE CHAIN - length 2 meters

type	chain	ISO	B	A	b	a	Kg./Mt.
T 0	3/8" x 7/32"	06B1	15	10	5,4	1,5	0,13
T 1	1/2" x 5/16"	08B1	20	10	7,4	2,2	0,18
T 1	1/2" x 5/16"	08B1	20	15	7,4	2,2	0,26
T 1	1/2" x 5/16"	08B1	20	20	7,4	2,2	0,34
T 2	5/8" x 3/8"	10B1	20	10	9,2	2,6	0,16
T 2	5/8" x 3/8"	10B1	20	15	9,2	2,6	0,25
T 2	5/8" x 3/8"	10B1	20	20	9,2	2,6	0,33
T 3	3/4" x 7/16"	12B1	25	10	11,3	2,4	0,20
T 3	3/4" x 7/16"	12B1	25	15	11,3	2,4	0,32
T 3	3/4" x 7/16"	12B1	25	20	11,3	2,4	0,43
T 4	1" x 17,02	16B1	40	15	16,5	3,5	0,45
T 4	1" x 17,02	16B1	40	20	16,5	3,5	0,68
T 5	1" 1/4 x 3/4"	20B1	45	15	19,0	4,3	0,55
T 5	1" 1/4 x 3/4"	20B1	45	20	19,0	4,3	0,77
T 6	1" 1/2 x 1"	24B1	60	15	24,6	5,6	0,67
T 6	1" 1/2 x 1"	24B1	60	20	24,6	5,6	0,97
* T 7	1" 3/4 x 1" 1/4	28B1	75	20	30,0	6,9	
* T 8	2" x 1" 1/4	32B1	80	20	30,0	7,8	



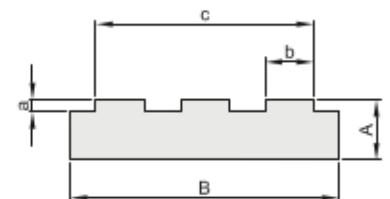
## “T” PROFILE FOR DOUBLE CHAIN - length 2 meters

type	chain	ISO	B	A	b	a	c	Kg/ Mt.
T 0.2	3/8" x 7/32"	06B2	25	10	5,4	1,5	15,74	0,22
T 1.2	1/2" x 5/16"	08B2	35	10	7,4	2,2	21,42	0,30
T 1.2	1/2" x 5/16"	08B2	35	15	7,4	2,2	21,42	0,46
T 1.2	1/2" x 5/16"	08B2	35	20	7,4	2,2	21,42	0,63
T 2.2	5/8" x 3/8"	10B2	40	10	9,2	2,6	25,79	0,32
T 2.2	5/8" x 3/8"	10B2	40	15	9,2	2,6	25,79	0,54
T 2.2	5/8" x 3/8"	10B2	40	20	9,2	2,6	25,79	0,77
T 3.2	3/4" x 7/16"	12B2	45	15	11,3	2,4	30,76	0,62
T 3.2	3/4" x 7/16"	12B2	45	20	11,3	2,4	30,76	0,85
T 4.2	1" x 17,02	16B2	65	15	16,5	3,5	48,38	0,86
T 4.2	1" x 17,02	16B2	65	20	16,5	3,5	48,38	1,19
T 5.2	1" 1/4 x 3/4"	20B2	70	15	19,0	4,3	54,45	0,89
T 5.2	1" 1/4 x 3/4"	20B2	70	20	19,0	4,3	54,45	1,22
T 6.2	1" 1/2 x 1"	24B2	88	20	24,6	5,6	72,96	1,48
* T 7.2	1" 3/4 x 1" 1/4	28B2	105	25	30,0	6,9	89,56	
* T 8.2	2" x 1" 1/4	32B2	105	30	30,0	7,8	88,55	



## “T” PROFILE FOR DOUBLE CHAIN - length 2 meters

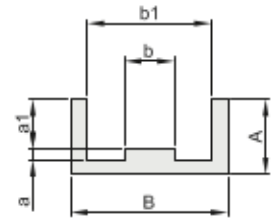
type	chain	ISO	B	A	b	a	c	Kg/ Mt.
T 0.3	3/8" x 7/32"	06B3	35	10	5,4	1,5	25,88	0,77
T 1.3	1/2" x 5/16"	08B3	45	10	7,4	2,2	35,24	0,82
T 1.3	1/2" x 5/16"	08B3	45	15	7,4	2,2	35,24	1,06
T 1.3	1/2" x 5/16"	08B3	45	20	7,4	2,2	35,24	1,27
T 2.3	5/8" x 3/8"	10B3	55	10	9,2	2,6	42,38	0,85
T 2.3	5/8" x 3/8"	10B3	55	15	9,2	2,6	42,38	1,13
T 2.3	5/8" x 3/8"	10B3	55	20	9,2	2,6	42,38	1,40
T 3.3	3/4" x 7/16"	12B3	60	15	11,3	2,4	50,22	0,86
T 3.3	3/4" x 7/16"	12B3	60	20	11,3	2,4	50,22	1,16
T 4.3	1" x 17,02	16B3	95	20	16,5	3,5	80,26	1,75



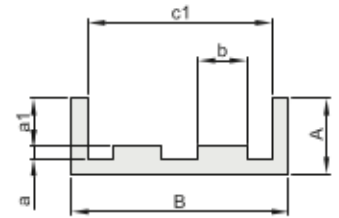
\* Built on request  
manufactured on request.

**PROFILE "E" FOR SIMPLE CHAIN - length 2 meters**

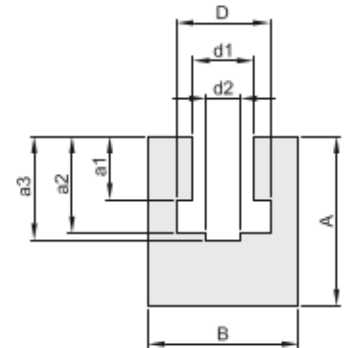
type	chain	ISO	B	A	a	a1	b	b1	Kg/Mt.
E 0	3/8" x 7/32"	06B1	25	10	1,5	4,35	5,4	15	0,17
E 1	1/2" x 5/16"	08B1	30	15	2,2	7,17	7,4	20	0,27
E 2	5/8" x 3/8"	10B1	33	20	2,6	9,45	9,2	23	0,39
E 3	3/4" x 7/16"	12B1	38	20	2,4	11,11	11,3	28	0,39
E 4	1" x 17,02	16B1	51	25	3,5	16,48	16,5	41	0,46


**PROFILE "E" FOR DOUBLE CHAIN - length 2 meters**

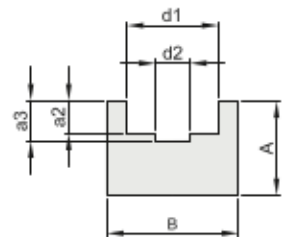
type	chain	ISO	B	A	a	a1	b	c1	Kg/Mt.
E 0.2	3/8" x 7/32"	06B2	36	15	1,5	4,35	5,4	26	0,43
E 1.2	1/2" x 5/16"	08B2	45	20	2,2	7,17	7,4	35	0,59
E 2.2	5/8" x 3/8"	10B2	50	25	2,6	9,45	9,2	40	0,77
E 3.2	3/4" x 7/16"	12B2	56	25	2,4	11,11	11,3	46	0,80
E 4.2	1" x 17,02	16B2	85	30	3,5	16,48	16,5	75	1,12


**"BL" PROFILE FOR SIMPLE CHAIN - length 2 meters**

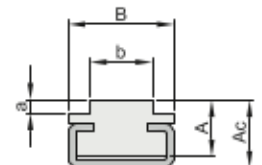
type	chain	ISO	B	A	a1	a2	a3	d1	D	d2	Kg/Mt.
BL 0	3/8" x 7/32"	06B1	20	25	5,6	8,7	10,0	6,6	9,3	4,0	0,43
BL 1	1/2" x 5/16"	08B1	24	30	7,6	11,5	13,5	8,7	12,8	5,0	0,55
BL 2	5/8" x 3/8"	10B1	30	35	9,5	13,5	14,8	10,4	15,4	6,0	0,83
BL 3	3/4" x 7/16"	12B1	40	35	11,5	15,9	17,5	12,3	16,9	7,0	1,10
BL 4	1" x 17,02	16B1	40	45	16,9	25,7	26,8	16,1	24,4	9,0	1,22
* BL 5	1" 1/4 x 3/4"	20B1	50	50	19,4	29,3	31,2	19,3	27,5	11,0	
* BL 6	1" 1/2 x 1"	24B1	60	60	25,2	38,2	40,1	25,7	36,5	16,0	
* BL 7	1" 3/4 x 1" 1/4	28B1	60	70	30,8	46,9	48,9	28,3	41,5	17,0	
* BL 8	2" x 1" 1/4	32B1	70	75	30,8	47,3	53,0	29,6	44,5	19,0	


**"U" PROFILE FOR SIMPLE CHAIN - length 2 meters**

type	chain	ISO	B	A	a2	a3	d1	d2	Kg/Mt.
U 0	3/8" x 7/32"	06B1	20	15	2,8	4,2	9,2	4	0,26
U 1	1/2" x 5/16"	08B1	25	15	3,5	4,8	12,7	5	0,31
U 2	5/8" x 3/8"	10B1	25	15	3,6	5,1	15,2	6	0,30
U 3	3/4" x 7/16"	12B1	25	20	3,9	5,7	16,7	7	0,40
U 4	1" x 17,02	16B1	35	25	8,4	10,0	24,4	9	0,63


**"CT" PROFILE FOR SIMPLE CHAIN - length 2 meters**

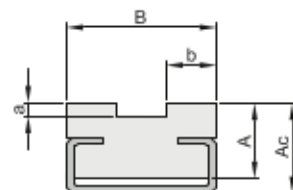
type	chain	ISO	B	A	a	b	Ac	Kg/Mt.
T 0 C3 A 15	3/8" x 7/32"	06B1	20	15	1,5	5,4	17	0,69
T 1 C3 A 15	1/2" x 5/16"	08B1	20	15	2,2	7,4	17	0,68
T 2 C3 A 15	5/8" x 3/8"	10B1	20	15	2,6	9,2	17	0,67
T 3 C3 A 15	3/4" x 7/16"	12B1	20	15	2,4	11,3	17	0,68
T 4 C5 A 15	1" x 17,02	16B1	28	15	3,5	16,5	18	0,93
T 5 C9 A 20	1 1/4" x 3/4"	20B1	38	20	4,3	19,0	27	1,51



\* Built on request  
manufactured on request.

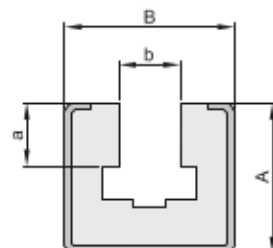
## “CT” PROFILE FOR DOUBLE CHAIN - length 2 meters

type	catena	ISO	B	A	a	b	Ac	Kg/Mt.
T 0.2 C3 A 15	3/8" x 7/32"	06B2	15,7	15	1,5	5,4	17	0,66
T 1.2 C3 A 15	1/2" x 5/16"	08B2	21,4	15	2,2	7,4	17	0,70
T 2.2 C5 A 15	5/8" x 3/8"	10B2	25,9	15	2,6	9,2	19	0,95
T 3.2 C5 A 15	3/4" x 7/16"	12B2	30,7	15	2,4	11,3	19	0,97
T 4.2 C9 A 20	1" x 17,02	16B2	48,3	20	3,5	16,5	27	1,61



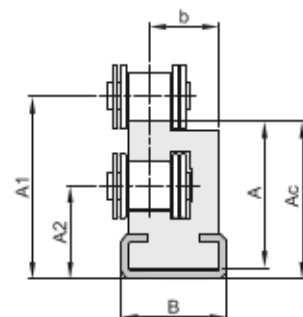
## “C 10 P” PROFILE FOR SIMPLE CHAIN - length 2 meters

type	catena	ISO	B	A	b	a	Kg./Mt.
C 10.0	3/8" x 7/32"	06B1	30	24	6,6	5,6	1,39
C 10.1	1/2" x 5/16"	08B1	30	24	8,7	7,6	1,33
C 10.2	5/8" x 3/8"	10B1	30	24	10,4	9,5	1,29
C 10.3	3/4" x 7/16"	12B1	30	24	12,3	11,5	1,23
C 11.4	1" x 17,02	16B1	45	40	16,1	16,9	2,92



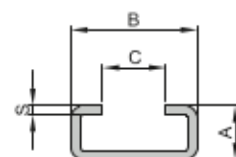
## “COMBI A-R” PROFILE FOR SIMPLE CHAIN - length 2 meters

type	catena	ISO	Prof. met.	A	B	A1	A2	Ac	b	Kg./Mt.
COMBI 0	3/8" x 7/32"	06B1	C 3	26,4	20	31,6	19,5	28,4	14,5	0,84
COMBI 1	1/2" x 5/16"	08B1	C 3	28,0	20	34,8	18,9	30,5	16,5	0,81
COMBI 2	5/8" x 3/8"	10B1	C 3	34,4	20	41,1	21,2	36,0	15,5	0,87
COMBI 3	3/4" x 7/16"	12B1	C 5	38,5	28	47,5	24,8	41,5	18,5	1,36
COMBI 4	1" x 17,02	16B1	C 9	52,4	38	69,4	45,1	61,4	25,0	2,25



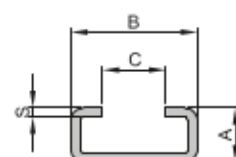
## METALLIC PROFILES - GALVANIZED - length 2 meters

type	A	B	C	S	Kg./Mt.
C3	10	20	10	1,5	0,46
C5	12	28	14	1,5	0,64
C9	18	38	22	1,5	0,93
C10	24	30	20	1,5	0,89
C11	40	45	31	2	1,96



## METALLIC PROFILES - STAINLESS STEEL - length 2 meters

type	A	B	C	S	Kg./Mt.
C3	10	20	10	1,5	0,46
C5	12	28	14	1,5	0,64
C9	18	38	22	1,5	0,93
C10	24	30	20	1,5	0,89



## POLYETHYLENE TECHNICAL FEATURES

MATERIAL : PE UHMW Very high density polyethylene.

SPECIFIC WEIGHT : 0,94 gr/cm<sup>3</sup>

HARDNESS : Shore D 64/67

TEMPERATURE OF USE : Up to 80 ° C

COEFFICIENT OF THERMAL EXPANSION : mm/° c 2 x 10<sup>-4</sup>

(2 mm / m for every 10 ° C)